

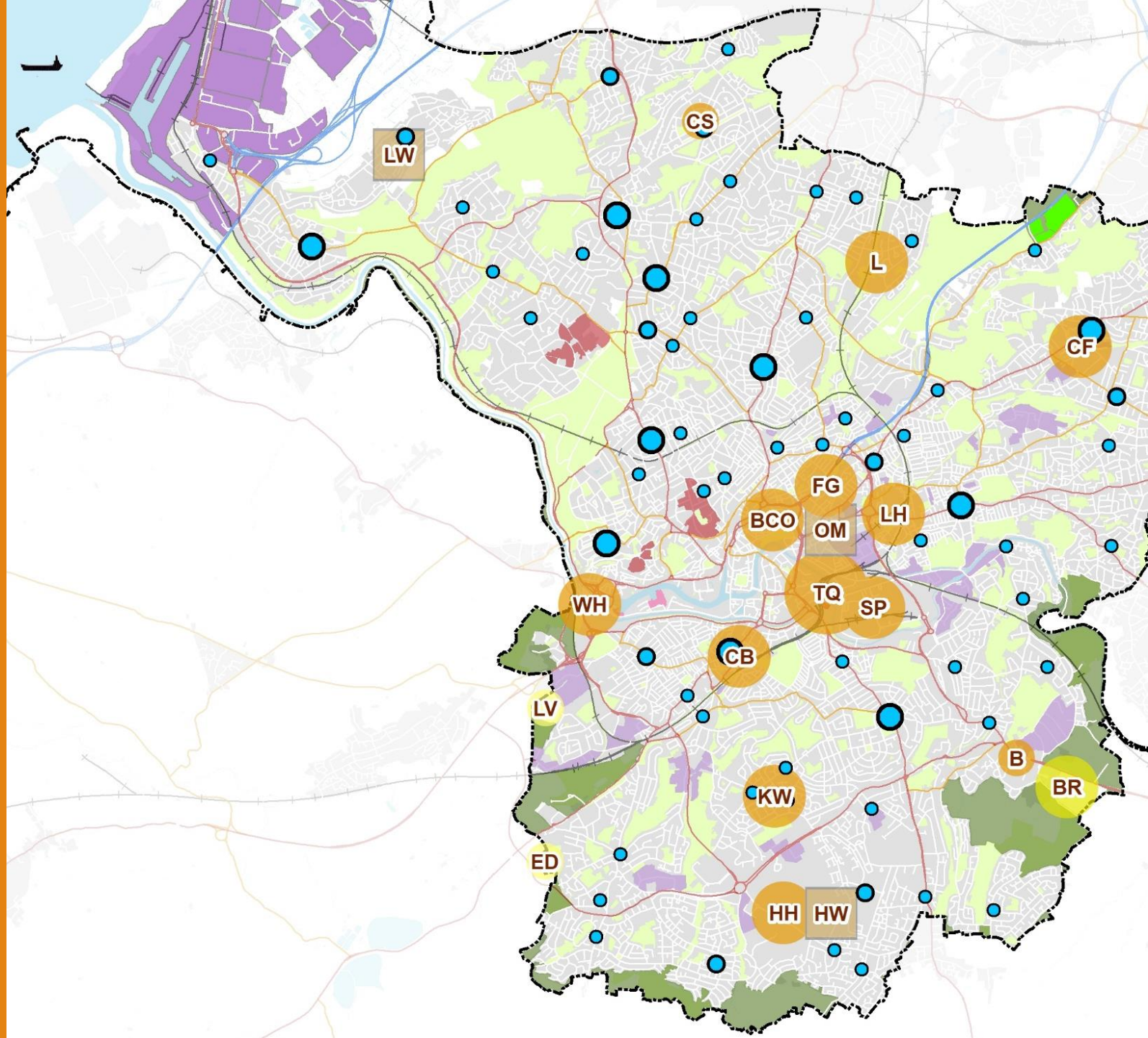


Bristol Parks Forum
14 October 2023

New Bristol Local Plan

PRE-SUBMISSION PUBLICATION –
NOVEMBER 2023

Publication - a
key step
leading to the
new local plan



Role of the local plan

To provide a positive vision for the future of each area; a framework for addressing housing needs and other economic, social and environmental priorities; and a platform for local people to shape their surroundings.

National planning policy stresses the importance of having a planning system that is genuinely plan-led.

'...an application for planning permission the decision must be taken in accordance with the development plan unless there are material considerations that indicate otherwise...'

Where a proposal accords with an up-to-date development plan it should be approved without delay

Progress and timetable

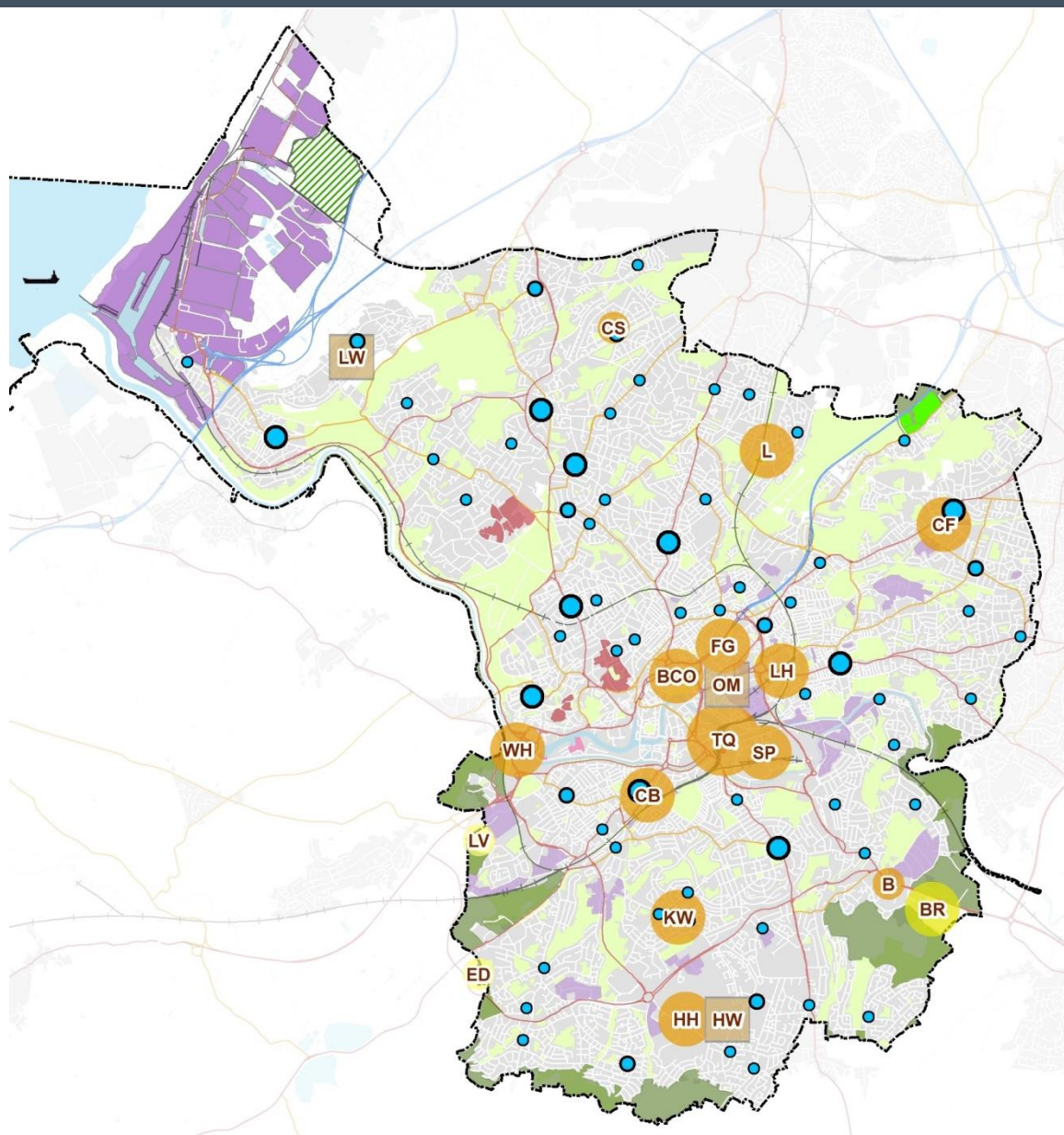
Local plan review	
Local plan review consultation (stage 1)	Feb- Apr 2018
Local plan review consultation (stage 2)	Mar – May 2019
Local plan review further consultation	Nov 2022 – Jan 23
New local plan – publication version for formal representations	November 2023
Examination	From Spring 2024
Adopt local plan	Spring 2025

Elements of the publication version

- Vision, objectives and aims
- Development strategy
- Infrastructure, develop contributions and social value
- Urban living: making the best use of urban land
- Housing
- Economy
- Centres, shopping and the evening economy
- **Green infrastructure and biodiversity**
- Transport
- Community facilities
- Net zero and climate
- Design and conservation
- Health, wellbeing and food sustainability
- Utilities and minerals
- Development allocations
- Policies Map

Development strategy

- ❑ 1,925 new homes each year – 34,650 by 2040
- ❑ 12,000+ affordable homes - 35% of housing sites to be affordable
- ❑ Efficient use of land – focus on brownfield development
- ❑ Regeneration areas – thousands of new homes, mixed uses
- ❑ Changes to Green Belt for 1,150+ new homes
- ❑ Economy and inclusive growth – centres and other locations supporting diverse sectors
- ❑ Education – sustainable provision of student accommodation



- ❑ Net zero new development – responding and adapting to climate change
- ❑ Biodiversity built in to new development – net gain
- ❑ New protections for open space – LGS and ROGS
- ❑ Health and wellbeing – healthy developments and neighbourhoods
- ❑ Design – liveable developments and neighbourhoods
- ❑ Community facilities secured and provided for



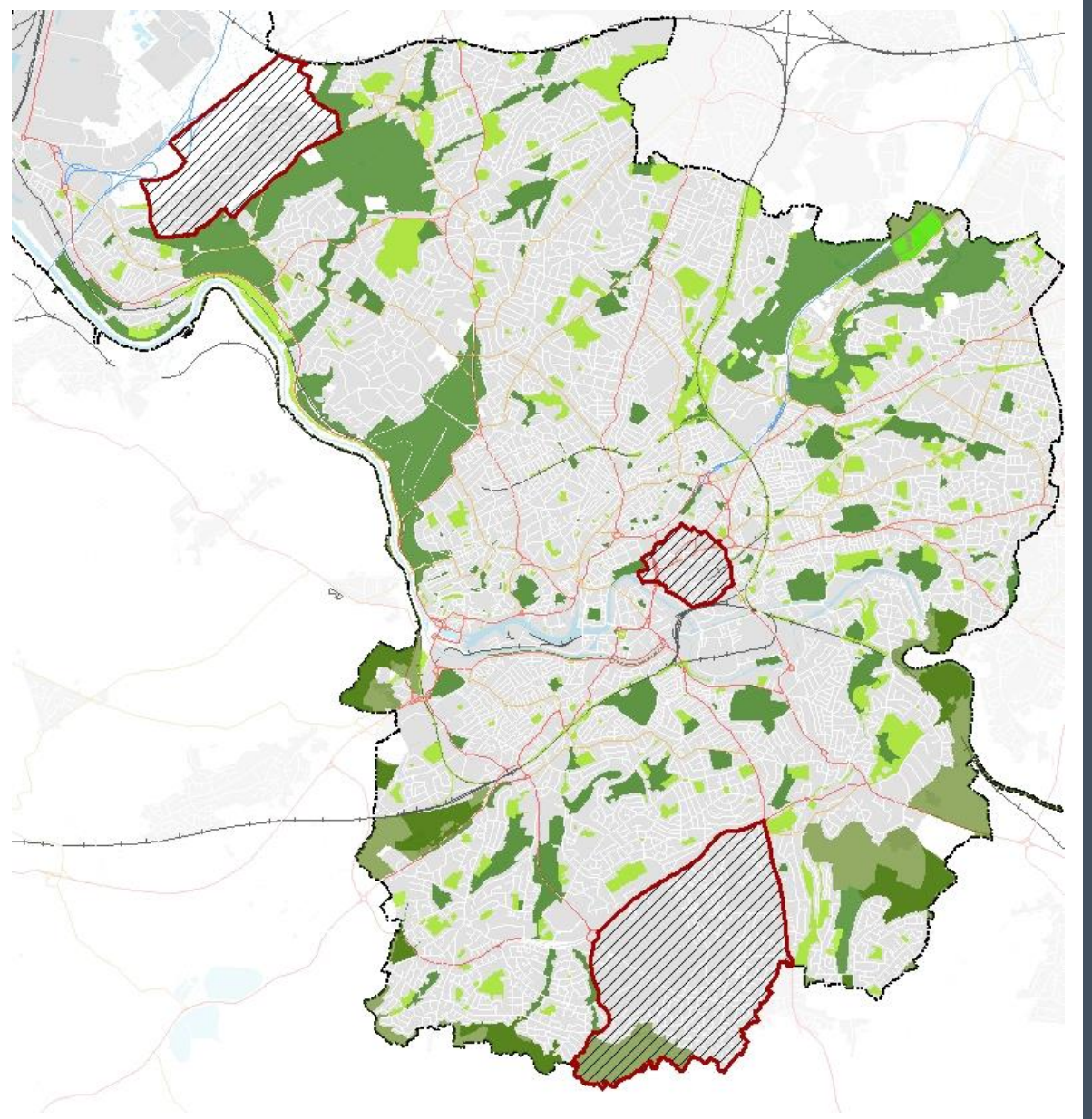
Biodiversity and Green Infrastructure

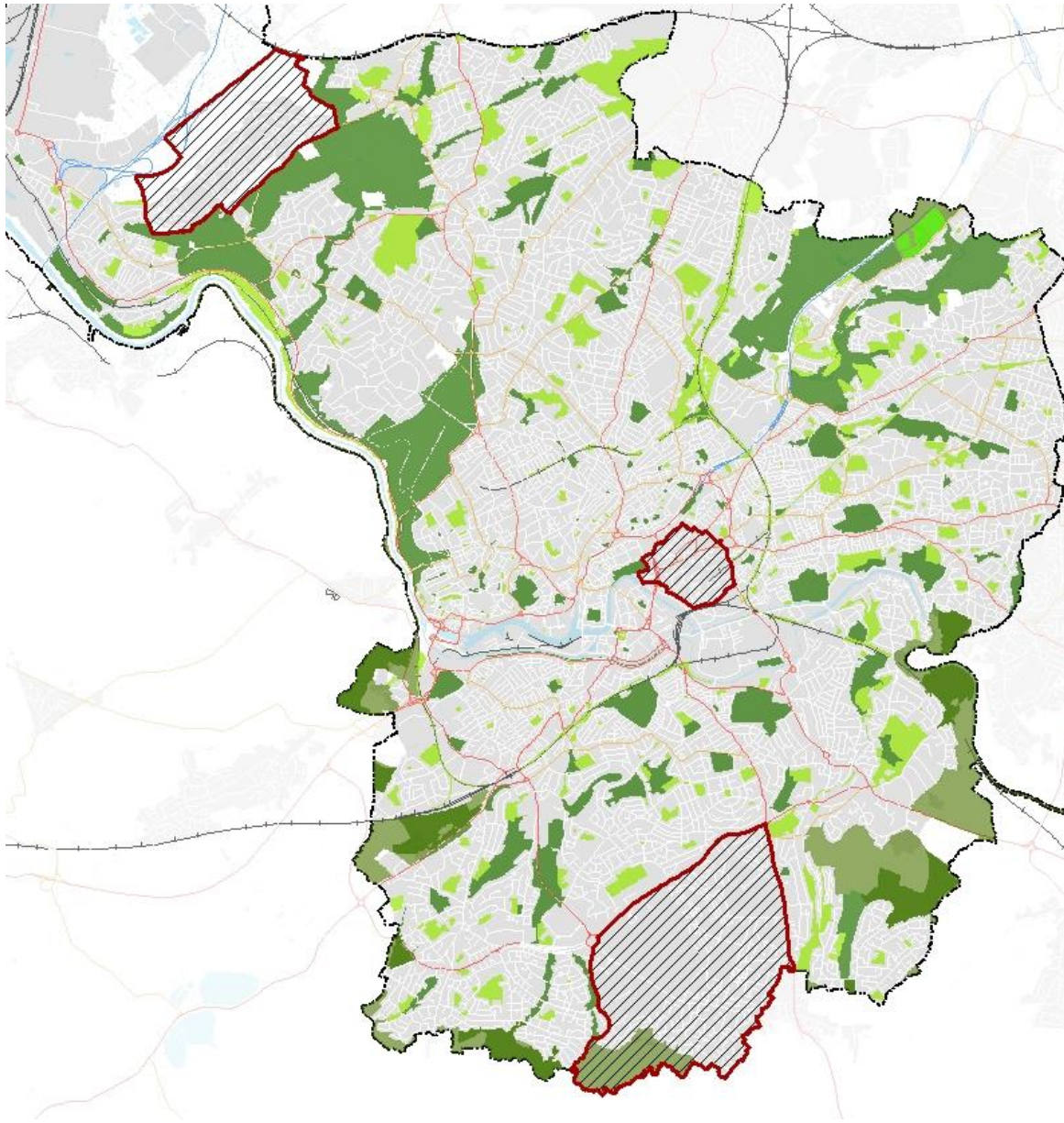
Biodiversity and green infrastructure

- Policy G1: Local Green Space
- Policy G2: Reserved Open Green Space
- Policy G4: Stapleton allotments and smallholdings

Green spaces in the new Local Plan

- ❑ 174 Local Green Spaces (1404 hectares)
- ❑ 406 Reserved Open Green Spaces (610 hectares)
- ❑ Neighbourhood plans make their own designations
- ❑ About 20% of city's land will have green space designations





Changes from 2019 consultation

- ❑ Additional spaces to be designated as Local Green Space in response to consultation feedback
- ❑ Local Green Space in some areas also covered by Green Belt
- ❑ Some development allocations replaced by open space designations



Next steps

New local plan –
publication version for
formal representations

November 2023

Examination

From Spring 2024

Adopt local plan

Spring 2025