

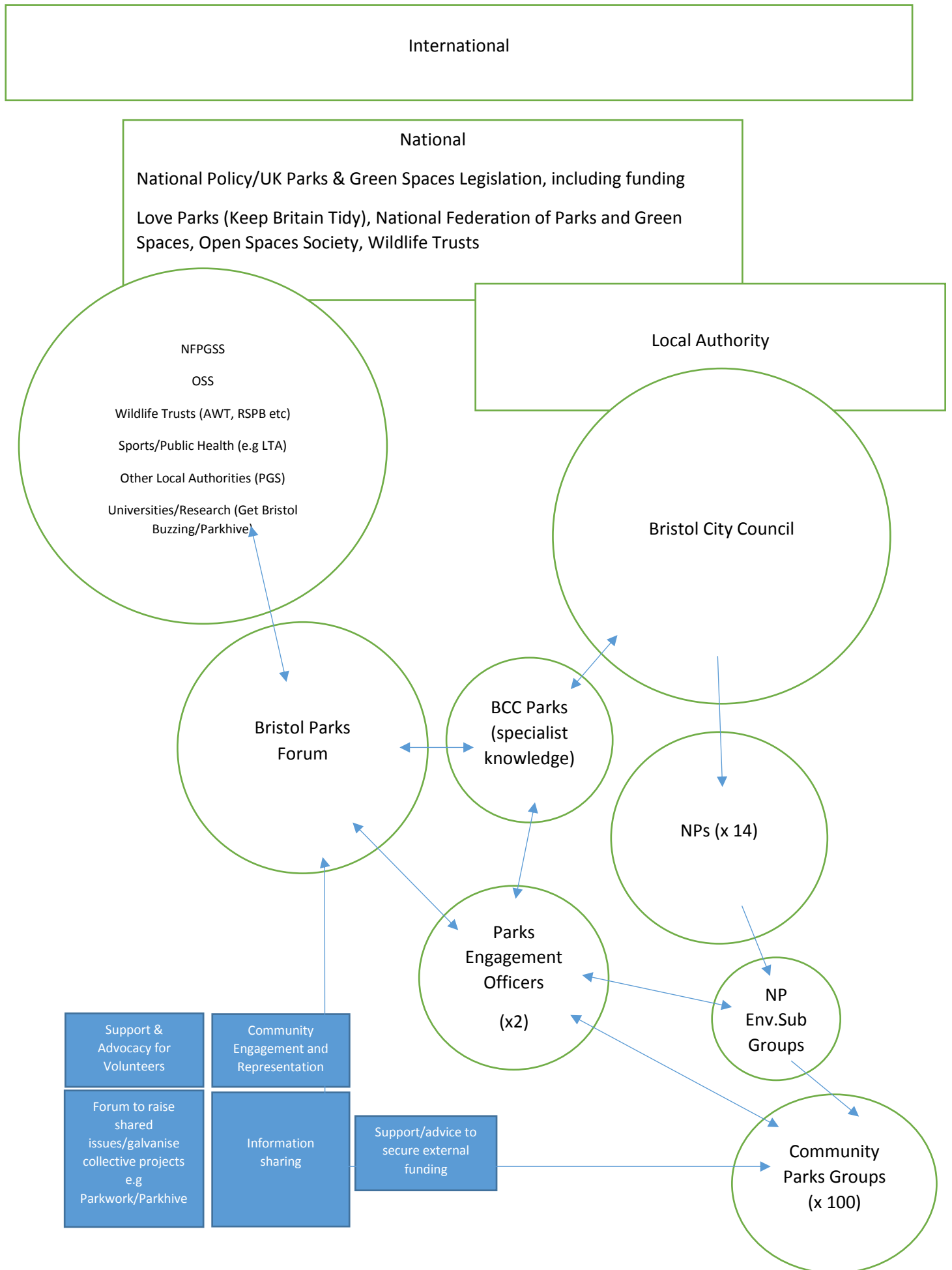
The purposes/priorities for BPF (agreed at the meeting):

- Working across BCC 'silos' (e.g Parks, Sports, Public Health, Neighbourhoods etc)
- Website – information sharing etc
- Resource and support for volunteers citywide (how to do things? who to talk to? sharing expertise & experience); continuity of support
- Partnership working with the local authority & collaboration for shared aims
- Recognition of knowledge and experience of parks volunteers & means to use this for the benefit of communities re: Bristol's parks and green spaces
- Communications – Parks/Green Spaces 'visibility/promotions' etc
- Growing 'FO/Action' groups across the city (recognised as playing a vital role in protecting and enhancing public parks through fundraising, practical work party activities and events engaging local residents in caring for their local parks)
- Ensuring parks are well maintained and accessible
- Encouraging participation (the next generation of residents to take on the role)
- Training for volunteers (e.g H&S to lead work parties/Use of powertools etc)
- Citywide agendas (e.g Wildlife) rather than 'management' approach
- Advocacy – Campaigning & a collective voice (e.g for wildlife)
- Influencing for the benefit of communities who use parks/green spaces & wildlife/nature etc
- Recognised as voice for the city re: parks and green spaces
- Citywide watch/work for ALL spaces
- Motivating and engaging new volunteers
- Citywide/collective voice for LNRs etc
- Positive/Production challenging of administration/decision-makers, influencing etc
- Providing the 'hope' factor (e.g threats of inappropriate development – Frome Valley)
- 1-2-1/in person relationships & support
- Conduit for voice of parks 'politically' (small 'p')
- Raising agendas coherently e.g Cycling in parks to enable productive resolutions/reduce citywide duplication of officer/volunteer time
- Trees/Nature – connected agendas
- Communications into influencing/decision-making structures
- Engagement with process of making decisions to help structure/share knowledge
- Sharing information with volunteer groups re: how to work better with BCC
- Putting faces to names
- Support for volunteers/groups & sharing of information to help ensure resources used most effectively
- Links between parks and other agendas/collaborating across areas

Potential future developments

- A tool library/bank (for volunteers citywide)
- Training – further practical training eg creation of management plans/fundraising etc
- Parks Forum more visible in decision-making communications/publicly disseminated communications – Councillors/Newsletters etc
- Funding Review/Annual info (document)
- Reciprocal working with local authorities
- Should be developing links with groups working nationally

Bristol Parks Forum



Terms of Reference for BPF

