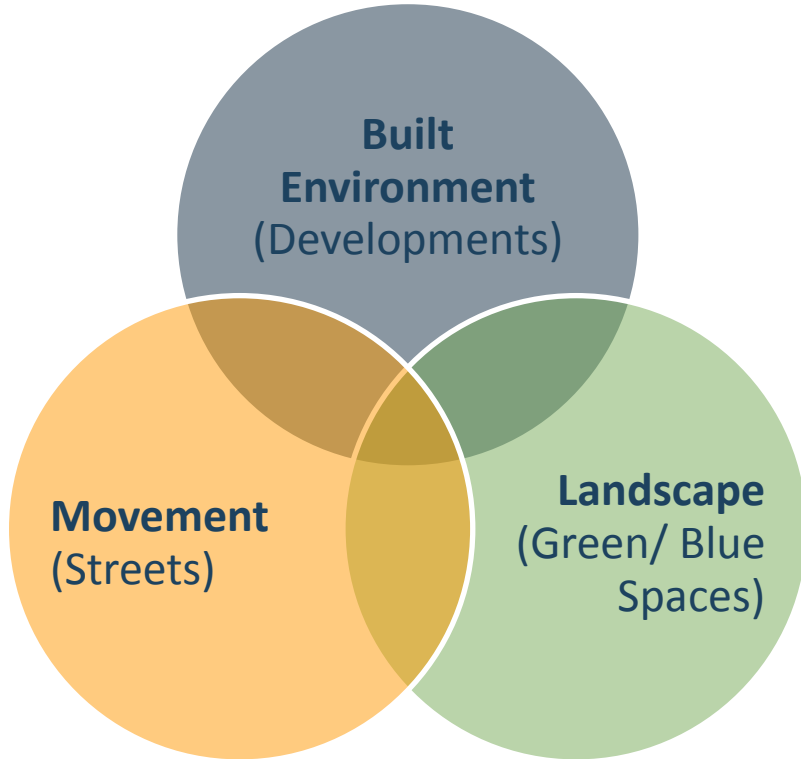


# A Green Infrastructure Strategy for Bristol?

17 October 2020



# Aims



## Green Infrastructure

- What is it?
- How does it link your park with the rest of the city and the region?
- The need for a Bristol GI Strategy?

## GI Assets

= green and blue

- |   |   |   |  |   |   |
|---|---|---|--|---|---|
| <ul style="list-style-type: none"><li>- Open countryside</li><li>- Rivers</li><li>- Waterways</li><li>- Watercourses</li><li>- Green corridors</li><li>- Landscape features</li></ul> | ▶ | <ul style="list-style-type: none"><li>- <b>Heritage estates</b></li><li>- <b>Open spaces</b></li><li>- <b>Nature reserves</b></li><li>- Woodlands</li><li>- Geological/<br/>biological<br/>conservation sites</li></ul> | <ul style="list-style-type: none"><li>- Gardens</li><li>- Courtyards</li><li>- <b>Parks</b></li><li>- Recreation areas</li><li>- Allotments</li><li>- Playing fields</li><li>- Cemeteries</li><li>- Cycle routes</li><li>- Walking routes</li><li>- Public rights of way</li></ul> | ▶ | <ul style="list-style-type: none"><li>- Grass</li><li>- Herbaceous<br/>plants</li><li>- Shrubs</li><li>- Hedges</li><li>- Trees</li><li>- Living walls</li><li>- Living roofs</li></ul> |
|---|---|---|--|---|---|



# GI Functions & Benefits

## FUNCTIONS

- Wildlife Habitats
- Setting
- Recreation
- Green active travel routes
- Climate change adaptation
- Water management
- Air quality management
- Food production
- Timber production

## BENEFITS

- Healthy nature
- Healthy people
- Healthy communities
- Healthy economy
- Healthy city

If GI is

**Planned,  
Designed and  
Managed**

## Green Infrastructure

### Living Roofs (Extensive)



## Green Infrastructure

# Living Roofs (Intensive)



## Green Infrastructure

# Living Walls







Distinction  
SCAFFOLD LTD  
0117 940 1400  
01776 897040













## Grassland

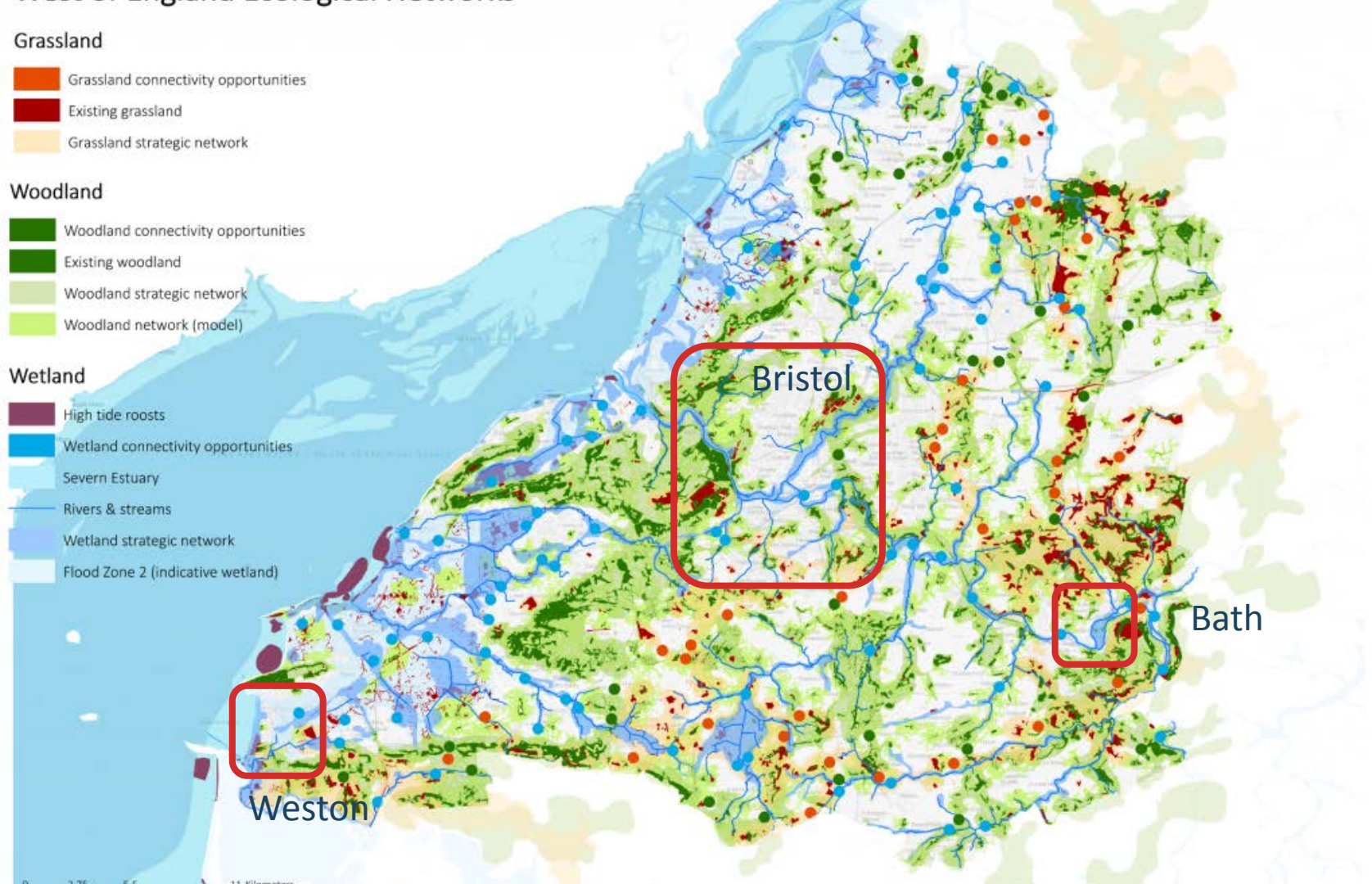
- Grassland connectivity opportunities
- Existing grassland
- Grassland strategic network

## Woodland

- Woodland connectivity opportunities
- Existing woodland
- Woodland strategic network
- Woodland network (model)

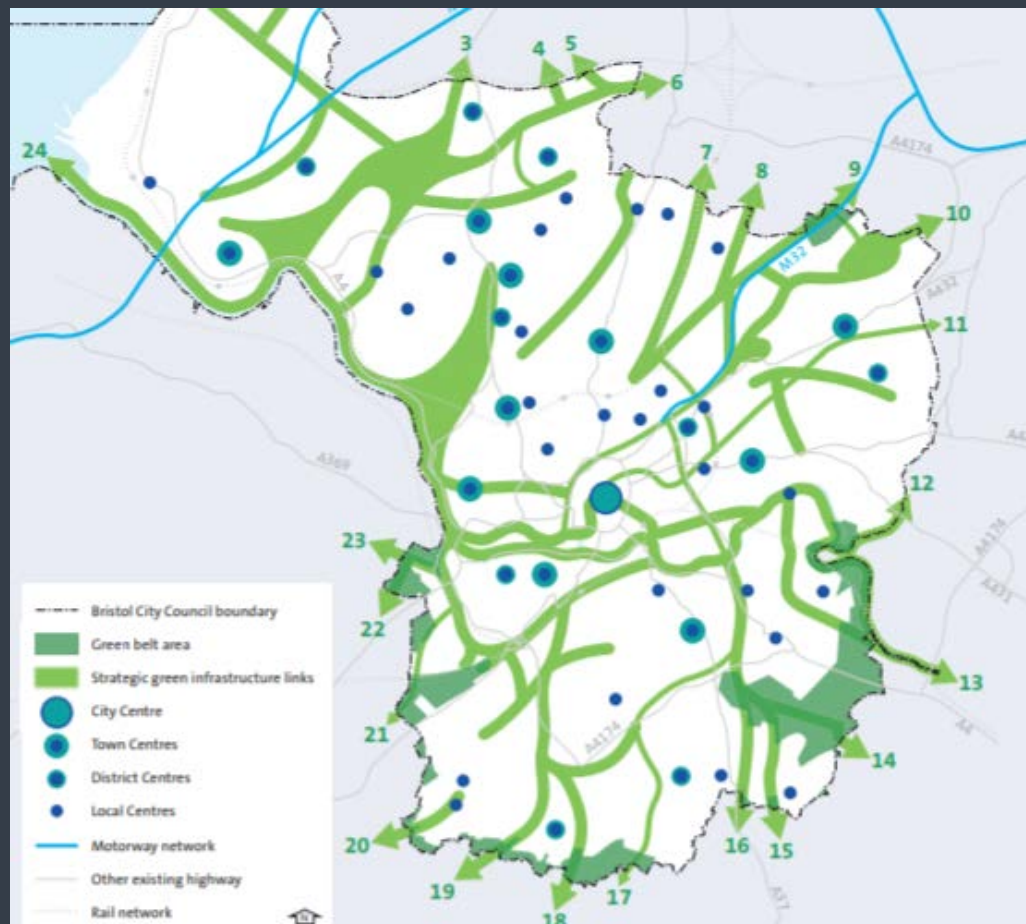
## Wetland

- High tide roosts
- Wetland connectivity opportunities
- Severn Estuary
- Rivers & streams
- Wetland strategic network
- Flood Zone 2 (indicative wetland)

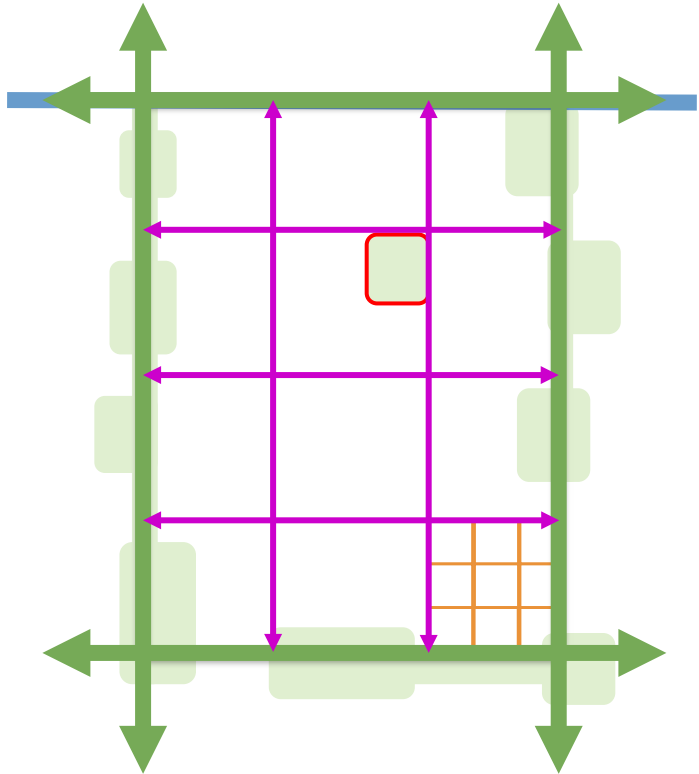


# BCS9 Strategic GI Network

Policy: Protect, enhance, extend



## A multi-layer approach



### Primary Network

- City Scale
- Core Drivers: GI function and biodiversity e.g Wildlife corridors and mosaic habitats etc.
- BCS9 diagram as starting point. Connections to WEP/WECA GI strategies.
- City wide public realm and open space (public and private)



### Secondary Network

- Neighbourhood Greenspace Areas
- Core Drivers: Movement and connectivity to open spaces and local community infrastructure .
- Public Realm



### Tertiary Network

- Individual properties and estates
- Core Drivers: Connecting primary and secondary networks primarily in terms of ecological function.
- Private realm

# Green Infrastructure

## A multi-layer approach



### Primary Network

- City Scale
- Core Drivers: GI function and biodiversity e.g Wildlife corridors and mosaic habitats etc.
- BCS9 diagram as starting point. Connections to WEP/WECA GI strategies.
- City wide public realm and open space (public and private)



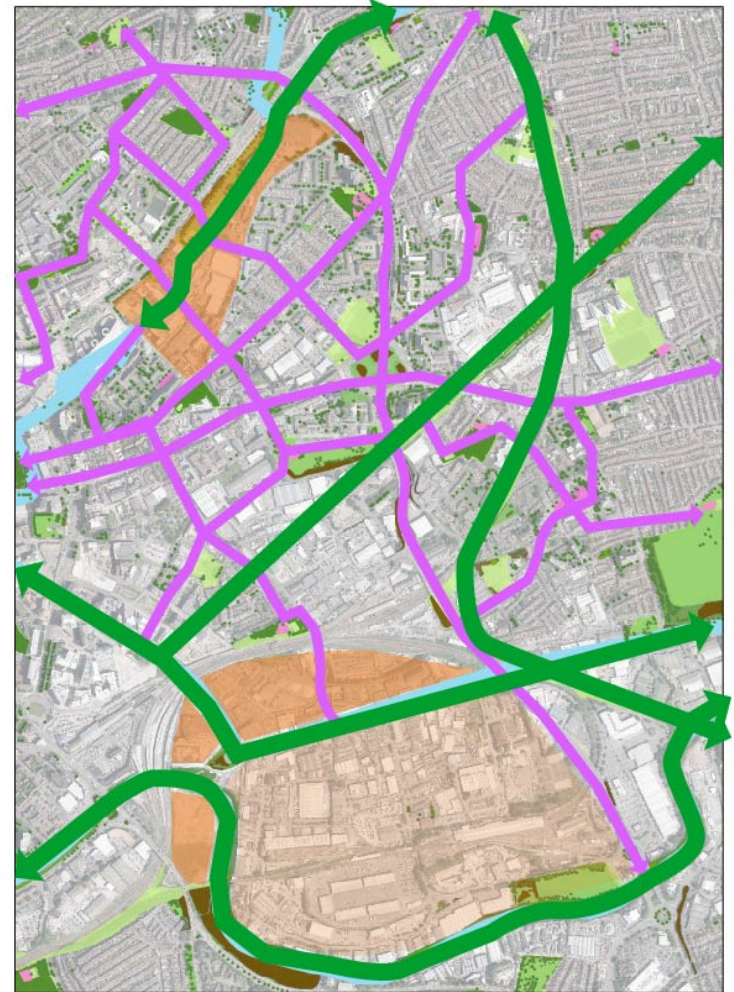
### Secondary Network

- Neighbourhood Greenspace Areas
- Core Drivers: Movement and connectivity to open spaces and local community infrastructure .
- Public Realm



### Tertiary Network

- Individual properties and estates
- Core Drivers: Connecting primary and secondary networks primarily in terms of ecological function.
- Private realm



# GI Toolkit

## Map the known issues

- heat vulnerability
- flood risk
- greenspace deficit
- biodiversity deficit
- deprivation
- poor health
- air quality
- development change

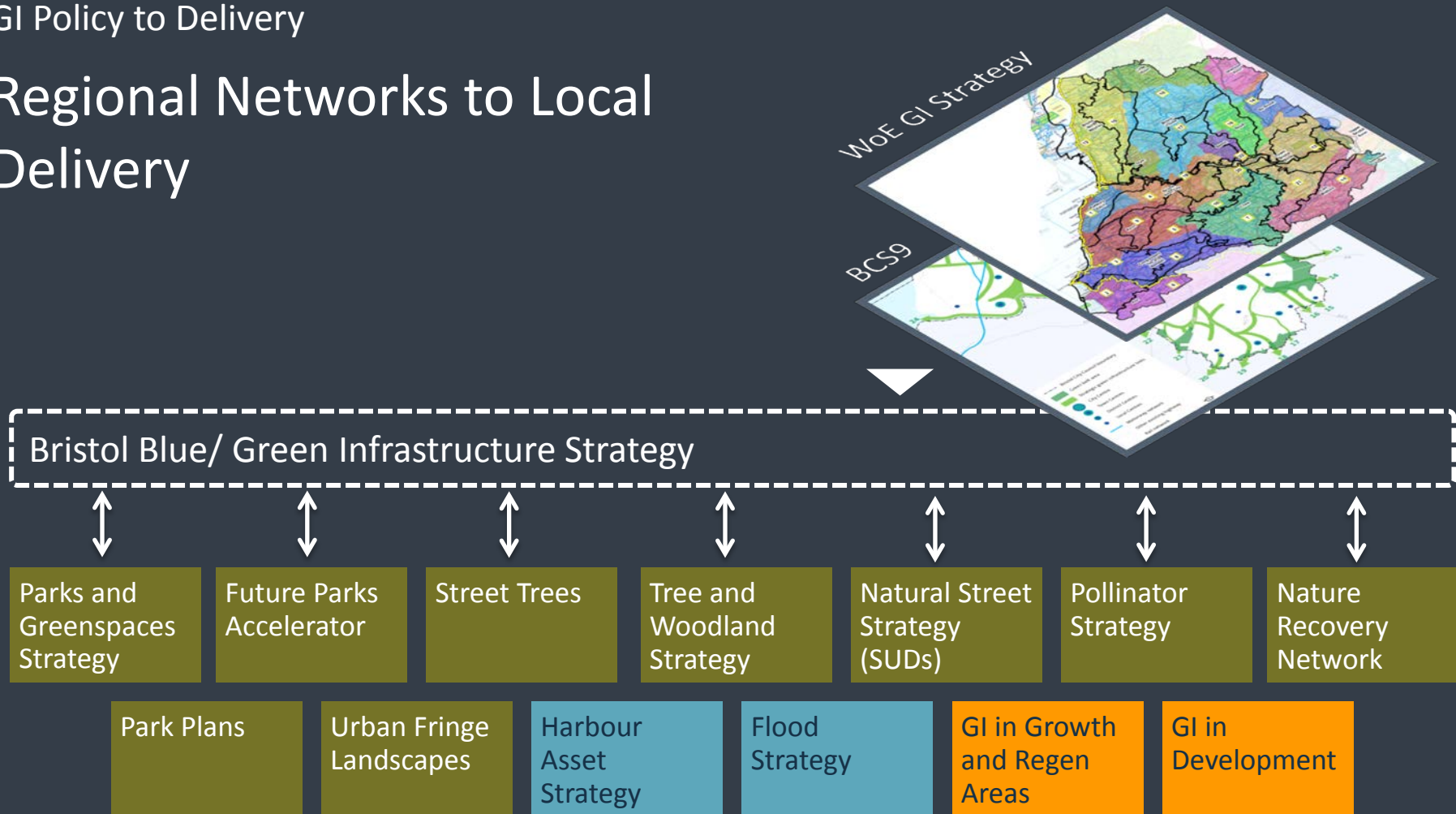
## Overlay them to establish opportunity areas for GI

- the places in the city where GI benefits can help address the issues

## Deliver GI solutions

- tree and hedges
- meadows
- pollinator planting
- sustainable drainage
- play and sport
- food growing
- green travel routes
- etc

# Regional Networks to Local Delivery



# What Next?

## Strategy Gap

### One City Plan 2021

- Informal discussions
- Making the case
- Identifying resources (time/ costs) to work on strategy
- Project planning
- Engagement and involvement
- Developing the strategy



Green Infrastructure

Thank you

[www.bristol.gov.uk/knowyourplace](http://www.bristol.gov.uk/knowyourplace)

Richard Goldthorpe  
Place Shaping Manager

City Design Group  
Bristol City Council  
[citydesigngroup@bristol.gov.uk](mailto:citydesigngroup@bristol.gov.uk)  
0117 922 3366

